

Travi piane isostatiche per esercitazioni di calcolo di reazioni vincolari e diagrammi degli sforzi

Lunghezze:

$$L_1 = 1,2 \text{ m}$$

$$L_2 = 1,7 \text{ m}$$

$$L_3 = 1,5 \text{ m}$$

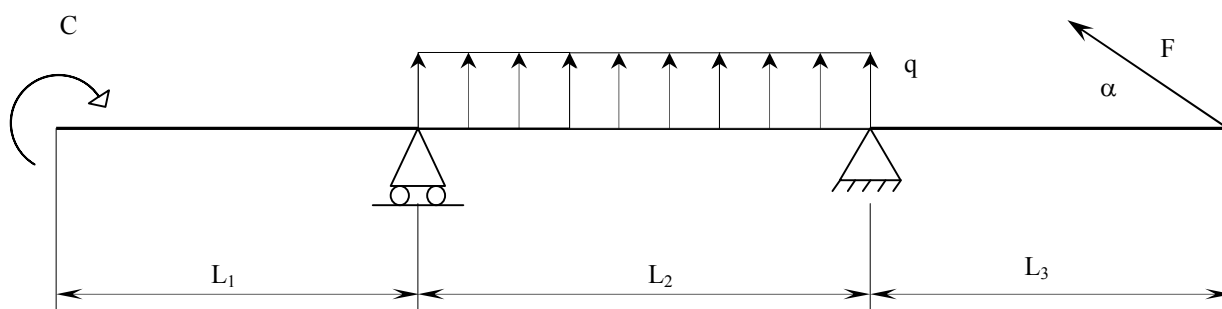
Carichi:

Coppia $C = 5000 \text{ Nm}$

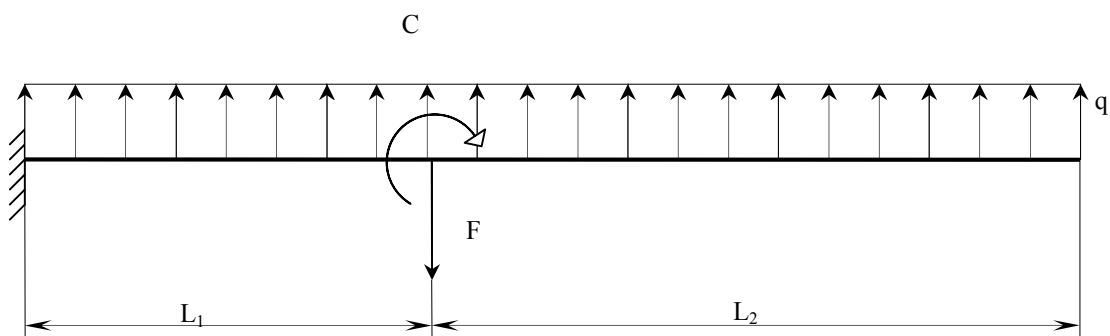
Forza concentrata $F = 3500 \text{ N}$ angolo $\alpha = 56^\circ$

Carico distribuito $q = 2500 \text{ N/m}$

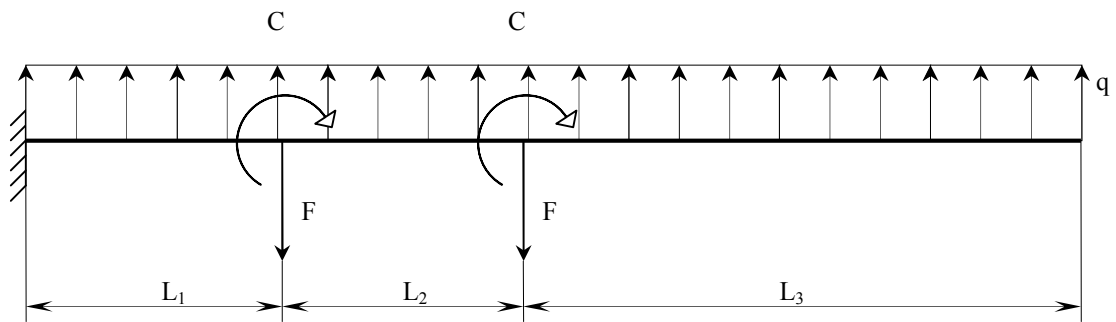
Trave 1



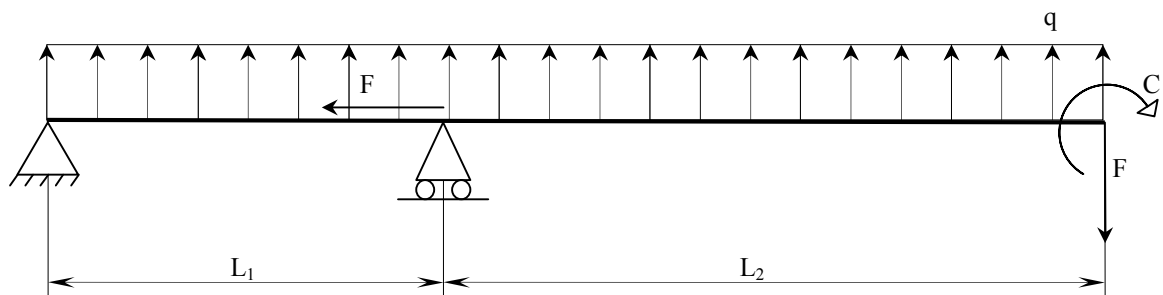
Trave 2



Trave 3



Trave 4



Trave 5

